



THE COMMUNITY FUND

BRONXVILLE • EASTCHESTER • TUCKAHOE

Local Giving for Local Needs



Annual Report 2018



THE COMMUNITY FUND

BRONXVILLE • EASTCHESTER • TUCKAHOE

Impacting our Community for 99 years

Nurturing local non-profit organizations, networking agencies and working with local government and community programs, our goal is to continue to improve upon this already wonderful place we call home.

Fall 2018

The Community Fund is pleased to present our 2018 Annual Report, detailing the impact that your donations have made on the Bronxville, Eastchester, and Tuckahoe community for the period July 1, 2017 through June 30, 2018. Thanks to the generous contributions of donors throughout our area, we were able to allocate **\$554,420** in total grants, providing support to 24 social service agencies and local community programs that assist all residents of Bronxville, Bronxville P.O. Eastchester, and Tuckahoe.

Highlights of the Community Fund's year include:

- Over \$40,000 awarded in one time discretionary grants that created strategic planning support to local area nonprofit organizations, repair and maintenance work on Main Street Park basketball courts, the upgrade of Eastchester Little League batting cages, and emergency backstop repairs for the Tuckahoe Youth Association.
- More than \$500,000 in ongoing support for our member agencies that affect Senior Services, Youth Initiatives, Family Support, Health and Wellness Programs, and Education and Prevention Services.
- Provided over 400 volunteer hours to our local service agencies and community programs through our annual review grant allocation process.
- Supported substance abuse awareness programs throughout our schools to address the ongoing addiction epidemic.

We ask you to join us, to make a difference for those in need, and to show the spirit of our community as we care for one another. A sincere Thank You to those who have given generously in time, effort, and funds to support this truly locally driven organization.

William Rizzo

2018-2019 President

Amy Korb

Executive Director



Mission

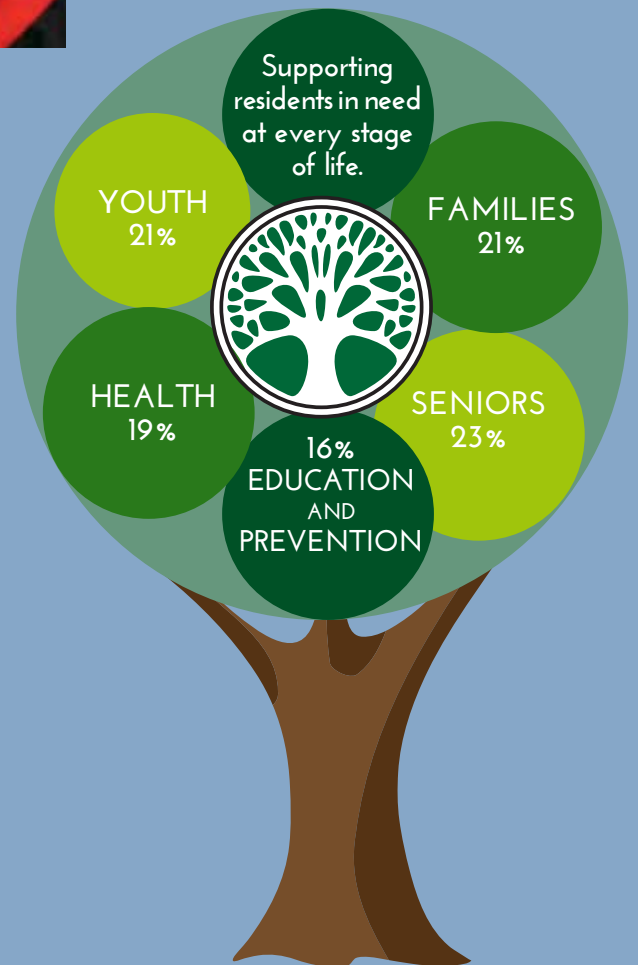
Founded in 1919, The Community Fund is a 501 (c) (3) non-profit corporation comprised of local volunteers who are dedicated to providing funding and administrative support to non-profit social service agencies and community programs that serve residents throughout the Bronxville, Bronxville P.O., Eastchester and Tuckahoe (BET) community.

\$554,420

AWARDED IN GRANTS IN FY 2018
TO BENEFIT LOCAL RESIDENTS.

The majority of funding shared by all of Bronxville, Bronxville P.O., Eastchester and Tuckahoe, including:

- State of the art ambulances
- After school and summer youth programs
- Substance abuse education and prevention programs
- Programs and services for seniors
- Therapeutic recreational programs for children and adults with disabilities and special needs



Maxwell Cottage Talk

A core part of the Community Fund's mission is to regularly assess the greatest needs of our residents and work with each agency to ensure that their programs are providing the most relevant education and services.

Last fall we engaged Lillian Neuman, Outreach/Education Coordinator at Maxwell Institute, to address concerns among Bronxville parents about teen consumption of alcohol and drugs as well as the increase in vaping. Using parent feedback to curate a small 'Cottage Talk' with Lillian at a private home, The Community Fund was able to help Maxwell develop a more intimate dialogue with residents about drug and alcohol education, while also providing tools for discussing these issues with their children.



“ As a parent I struggle with how to best address the peer pressure my child faces on an everyday basis. I feel ill equipped to give guidance when I don't have a clue about the dangers. I was shocked at how prevalent the use of these e-cigarette products is. I mean I guess I knew the seniors were doing it - but 8th Graders! Moms after the meeting confirmed it's really common, telling me about events where it was happening (and I was at these events!). I didn't know about all the nicotine and chemicals in them and it makes me so angry at these companies - marketing to children with such an addictive product. I really felt like The Community Fund and Maxwell Institute facilitated an open dialog with all the parents attending and created an atmosphere that was inclusive and nonjudgmental. The fact that it was hosted in a private home felt welcoming. For me, I now see firsthand how the Fund helps me feel supported in a more personal way and strengthens my relationships with my neighbors. ”

— A Bronxville Parent

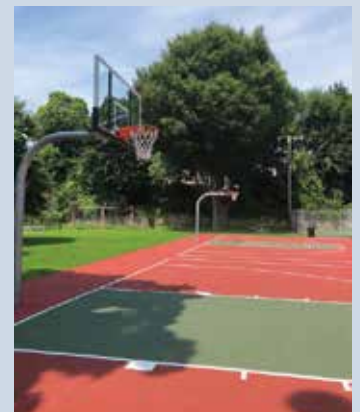
Discretionary Grants

In the last year, The Community Fund awarded \$40,000 in special discretionary grants that were evaluated based on their ability to improve the quality of the lives of our residents.

This grant program was established to fund either an emergency response to an unforeseen or pressing agency need, a specific time-limited project/program, or seed money for a new initiative.

We are proud to announce that our 2018 discretionary grants involved capital improvement projects that directly benefit our families and youth including upgrading the batting cages for Eastchester Little League, repairing the backstop at Labriola field for Tuckahoe Youth Association, and resurfacing of the basketball courts for the village of Tuckahoe.

In addition, The Community Fund was able to pay for critical strategic support for two of our Senior Service organizations that are daily resources for many wonderful seniors across our community.



“ Lillian provided invaluable information on warning signs, actual usage, and help for parents that is available through the Maxwell Institute. It gave me a basis and informational background to start a conversation with my children that I would not have had otherwise. Thank you Community Fund for providing such a beneficial service! ”

– Robin Lewis
middle/high school parent



Making A Difference

BECAUSE OF OUR IN-DEPTH KNOWLEDGE OF THE NON-PROFITS SERVING THE BET COMMUNITY, YOUR CONTRIBUTION IS DIRECTED TO WHERE IT IS MOST NEEDED, INCLUDING:

Youth

- Affordable after-school enrichment programs and summer camp for children
- Local youth programs that promote confidence, self-esteem, leadership and decision making skills
- Community police programs that focus on safety, positive behavior and character building

Families

- Bereavement services for children and their surviving parent(s) who have experienced the death of a parent or sibling
- Therapeutic/recreational programs that support our children, teens and adults with disabilities and special needs
- Low cost counseling for qualifying individuals and their families

Seniors

- Transportation, home help and referral services for local seniors to help them stay active and able to remain in their homes
- Weekly activities that promote social interaction, mental acuity and physical fitness
- Music, dance and movement therapy programs to enhance cognitive functioning

Health

- A new state-of-the-art ambulance every three years for Eastchester Volunteer Ambulance Corps (EVAC), the primary ambulance provider for our community
- Support services for cancer patients including nursing, social work, psychological support, advocacy, nutritional counseling, case management and financial assistance
- Education and support for those with life limiting and terminal illnesses



Education and Prevention

- Substance Abuse education programs in all three BET school districts
- Extra child day care hours for qualifying families so that parents can work while the developmental needs of their children are being met
- Scholarships to further higher education for graduating seniors from all three BET High Schools

Discretionary Grants

- One-time grants, distributed throughout the year, to help with a specific need or to foster a new initiative



“ The Community Fund helps our frail seniors get to their medical appointments more safely by providing funding for an escort on our vehicle and also allows senior citizens to do their marketing by providing the cost for a part-time driver. Essential services that keep our seniors on the move!

– Janice Munson, LMSW

Assistant Director, Eastchester Senior Programs and Services

”



Where Your Donations Go

BACK INTO THE BET COMMUNITY THROUGH LOCAL NON-PROFIT ORGANIZATIONS, SOCIAL SERVICE AGENCIES AND COMMUNITY PROGRAMS.

Youth

WESTCOP/Eastchester Community Action Partnership (ECAP) – provides needed community services, including a food pantry, after-school programs, summer activities for children, and emergency support. *CF dollars fund the Books & Beyond After-School Program and the Summer Enrichment Program.* westcopny.org/eastchester

The Eastchester Teen Scene – offers a series of organized programs throughout the year, including school breaks and summer months, to Bronxville, Eastchester and Tuckahoe youth in grades 7-9. Offered through the Eastchester Department of Parks and Recreation, the programs are geared to provide fun, safe, age-appropriate activities for teens. *CF dollars provide general program support.*

www.eastchester.org/departments/recreation.php

The Eastchester Youth Council, Inc. – offering tuition-free instruction in drama, voice, dance, instrumental music and theater crafts, culminating with a musical presentation in August. *CF dollars provide support for this summer theater enrichment program for Bronxville, Eastchester and Tuckahoe youth.*

Bunny Rappaport, Executive Director – rappmom22@aol.com

Tuckahoe Police Youth Initiatives – innovative programs for young people designed to foster positive police officer – youth relationships, including: COPS For Kids Softball Game, Run For Your Life Road Race, Safe Riders Day, Tuckahoe Police Department Open House and the Law Enforcement Explorers Program. *CF dollars fund these dynamic programs that positively impact the lives of our young people.*

Tuckahoe Police Department – 961-4800



Summer Program



Teen

Families

The Bereavement Center of Westchester – provides support for children and adults in the community who have had a death in their lives through individual counseling and peer support groups. **CF dollars help sponsor the Bronxville Tree House Program** – a program for children between the ages of four and eighteen whose parent or sibling has died, and their surviving parent(s) or guardian(s). www.thebereavementcenter.org

The Counseling Center, Inc. – offers counseling and psychotherapy to families seeking help for a variety of emotional conflicts and family problems. **CF dollars provide fee subsidy support for BET residents in need.** www.counselingcenter.org

The Maxwell Institute – provides assessment, intervention, treatment and recovery support for those fighting substance abuse. **CF dollars provide fee subsidies for treatment services to BET residents in need.** www.stvincentswestchester.org/themaxwellinstitute.html

South East Consortium for Special Services – offers therapeutic recreational programs, leisure experiences, and respite opportunities for youth, teens and adults with disabilities and special needs. The programs are geared to enhance the individual physically, emotionally, culturally and socially, by offering opportunities to interact with others while engaging in community based activities. **CF dollars support BET residents participating in programs, including those at the Bronxville High School, the Cottle School, the Eastchester Middle/High School and the Tuckahoe Community Center.** www.secrec.org

Tuckahoe Trolley – provides free transportation for residents in need every Friday and Saturday, weather permitting, with 14 stops in Tuckahoe and Eastchester. **CF dollars help support the cost of running the Trolley.**

“ The Community Fund’s support of The Maxwell Institute’s addiction education and prevention programs has enabled us to bring a message of hope and recovery. Our partnership has allowed us to bring unique programs such as “Hidden in Plain Sight” and Cottage Talks that further facilitate understanding and communication about the terrible disease of addiction. ”

– Karen-Goldman Hertz
Director, The Maxwell Institute

The Bereavement Center
of Westchester



Seniors

Eastchester Senior Programs & Services – provides a broad range of community-based support services designed to enable Bronxville, Eastchester and Tuckahoe seniors to remain in the community, living independently for as long as possible. **CF dollars support the weekly activity programs at the Lake Isle, Garth Road and Jackson Avenue senior centers. CF also funds medical and bus escorts, housecleaning services, the Shopping Chores & More Transportation Program and Sundays at Concordia.** www.eastchester.org/departments/senior_programs_and_services.php

Gramatan Village – offers seniors access to a network of affordable services, transportation and home help, with the goal of helping them remain in their homes safely and confidently as they age. **CF dollars provide membership fee subsidies to BET residents who qualify.** www.gramatanvillage.org

The Senior Citizens Council – offers programs to prevent isolation in seniors residing in Bronxville, Bronxville 10708, and Tuckahoe. **CF dollars help pay for exercise, cultural and educational programs at its Bronxville and Tuckahoe centers.** <http://bronxvilleseniors.org>; www.tuckahoeseeniors.org

Wartburg – provides premier residential and healthcare services including a skilled nursing facility, short-term inpatient/outpatient rehabilitation, independent/assisted living, specialized Alzheimer's/dementia care as well as home care and adult day care services for seniors. **CF dollars support the dance and movement therapy program for residents from the BET community.** www.wartburg.org

“ A new member of Bronxville Senior Citizens, someone recently retired and who had been struggling with loneliness and depression, came up to me, and said, “You have to hear this...” (usually that means trouble) She continued, “I don’t know if people ever tell you this, but this program has brought joy back into my life... The atmosphere is warm and friendly, the classes are wonderful and this has really changed my whole attitude about life.” I thought you all at The Community Fund needed to hear that... be proud that your work brings joy. It really doesn’t get better than that. ”

– A Bronxville Senior



Dance Therapy Wartburg

Health

Cancer Support Team, Inc. – offers a comprehensive program of free services at any stage of the disease for cancer patients and their families living in lower Westchester including nursing, counseling, education, case management and other supportive services. **CF dollars provide financial support for their work in the BET community.**

www.cancersupportteam.org



Cancer Support Team staff provides professional caring services

The Community Flu Shot Program at NYP/Lawrence Hospital Center – **CF dollars fund this program which administered 750 vaccines in 2015 to residents of BET.**

Eastchester Volunteer Ambulance Corps (EVAC) – EVAC is the primary ambulance provider to residents of Bronxville, Eastchester and Tuckahoe. **CF dollars are accrued each year to be used toward the purchase of a new ambulance every three years to maintain its fleet of three.**

www.eastchesterems.com

Westchester End-of-Life Coalition (WELC) – works to improve the end-of-life experience by informing the public about available services and acting as a conduit for networking among lay people and professionals in the field. **CF dollars provide ongoing support in the BET community for their general work on maintaining and enhancing resources, and the distribution of information, including the “Everybody Needs a Proxy” campaign and “Live With Care” website.** www.westchesterendoflife.org

Education and Prevention Programs

Andrus Early Learning Center (AELC) – offers quality day care and early childhood education for children ages six weeks to five years. **CF dollars support 17 preschool children in AELC’s Head Start Program, from qualifying families residing in the BET community, allowing them extended hours to meet the educational and developmental needs of the children.**

<http://andruscc.org/?s=early+learning+center>

D.A.R.E. (Drug Abuse Resistance Education Program) – focused on the prevention of drug, alcohol and substance abuse, the D.A.R.E. program also addresses handling peer pressure, bullying and making overall good decisions. The educators are specially trained police officers, fostering the police officer - youth relationship. **CF dollars fund the programs in the Eastchester and Tuckahoe schools.**

The Maxwell Institute – offers alcohol and substance abuse education and prevention programs to families, schools, community groups and professionals. **CF dollars fund the drug and substance abuse programs presented to BET schools, colleges, parents and local community groups.**

www.stvincentswestchester.org/themaxwellinstitute.html

Tuckahoe Library – Library-provides access to information, books and multi media materials, programs, and cultural enrichment to a diverse Tuckahoe Community. **CF dollars support after school and special programming for children and adults on a wide range of interests including early childhood enrichment , SAT Prep, and health and fitness.**

Michael Frey Scholarships – given in memory of Michael Frey, and in appreciation for all the support the community receives from its dedicated police, fire and other emergency workers. **CF dollars fund these scholarships given to students graduating from each of the three BET high schools.**



2018 Michael Frey Scholarship Recipients

FY 2019 Community Fund Grants

YOUTH PROGRAMS

Concordia Conservatory – <i>Musical Adventures at the Library</i>	\$2,600
Eastchester Community Action Partnership – <i>After School & Summer Youth Program Support</i>	\$52,000
Eastchester Teen Scene – <i>Organized programs for Teens in BET area</i>	\$10,000
Eastchester Youth Council – <i>Youth Summer Theater – Program Support</i>	\$18,000
Youth Programs Subtotal	\$82,600

FAMILY SERVICES

The Bereavement Center – <i>Support of the Bronxville Tree House</i>	\$35,000
Counseling Center – <i>Fee Subsidy Program</i>	\$40,000
The Maxwell Institute – <i>Fee Subsidy Program</i>	\$15,000
S.E. Consortium for Special Services – <i>Recreation Programs for Children Teens & Adults with Disabilities</i>	\$20,000
Tuckahoe Trolley – <i>Transportation for Seniors & Families</i>	\$8,000
Family Services Subtotal	\$118,000

SENIOR SERVICES

Eastchester Senior Program & Services – <i>Support for Eastchester Centers & Services</i>	\$44,500
Gramatan Village – <i>Fee Subsidy Program</i>	\$10,000
Senior Citizens Council – <i>Support for Bronxville & Tuckahoe Centers</i>	\$38,000
Wartburg – <i>Dance and Movement Therapy Program</i>	\$15,300
Senior Services Subtotal	\$107,800

HEALTH SERVICES

Cancer Support Team – <i>Cancer Counseling & Support</i>	\$35,000
EVAC – <i>Ambulance Purchase Program</i>	\$50,000
The Community Flu Shot Program – <i>NYP/Lawrence Hospital – Vaccine Funding</i> ..	\$13,000
Westchester End of Life Coalition – <i>Program Support</i>	\$12,000
Health Services Subtotal	\$110,000

EDUCATION & PREVENTION SERVICES

Andrus – <i>Early Learning Center – Tuition Assistance</i>	\$40,000
D.A.R.E. Eastchester – <i>Substance Abuse Education</i>	\$7,000
D.A.R.E. Tuckahoe – <i>Substance Abuse Education</i>	\$3,200
The Maxwell Institute – <i>Drug/Alcohol Education & Prevention Programs</i>	\$40,000
Michael Frey Scholarships – <i>Scholarships to Graduating Seniors</i>	\$9,000
Tuckahoe Library – <i>Summer Programming & SAT Prep Courses</i>	\$9,180
Tuckahoe Police Youth Programs – <i>Community Youth Programs & D.A.R.E. Support</i>	\$7,300
Education and Prevention Services Subtotal	\$115,680

<i>Special Projects Discretionary Fund</i>	\$50,000
--	----------

TOTAL GRANTS	\$584,080
---------------------------	------------------

How You Can Help

Make a Tax-deductible Contribution

A contribution to The Community Fund makes a positive impact on the lives of people living here in our BET community.

- **Contribute Directly or Online** - We accept cash, personal checks, American Express, Visa and Master Card. You can also call us at (914) 337-8808 with your credit card information or donate through our website www.thecommunityfund.org.
- **Contribute Through Your Workplace** - Many companies have Matching Gift, United Way or Corporate Giving campaigns. Please check with your employer on how you can maximize the strength of your gift and reference our 501 (c) (3) Tax ID# 13-1852829; address, 17 Sagamore Road, Bronxville, NY 10708 and be sure to notify us so that we are aware of your gift.
- **Contribute Stock** - Donations of stock allow you to avoid capital gains tax on appreciated securities. Please transfer to: *Dreyfus DTC 0443 The Community Fund of Bronxville-Eastchester-Tuckahoe Account # 74B176100.*



Be an Evaluator

Evaluators are the heart and soul of The Community Fund. Each year we work with volunteers who have been chosen based on their local knowledge, expertise and talents. Our volunteers then meet on-site with each applicant agency to review the need for and impact of the services provided, how well the services are provided, and the financial position of the agency. Based on their comprehensive review, the evaluators make a funding recommendation as to how The Community Fund can best support the agency and our residents.



Support our Golf Outing

Proceeds from our annual golf outing provide approximately 20% of our total revenue each year, directly impacting the amount of grant allocations we are able to make.

- **Be a Sponsor** - Sponsorships are tax deductible and provide a great way to support the BET community.
- **Donate to the Event's Auction or Raffle through Gifts in Kind** - Revenue from these events is imperative to the success of our outing.
- **Join our Golf Committee** - Help plan the day, find sponsors, or organize the auction while getting to know people from all three BET communities.
- **Join us that day** - Play golf or attend the awards dinner and auction that evening. Either way, your support will help!



The Community Fund is a 501(c) (3) Charitable Organization.
Contributions are tax-deductible to the maximum extent provided by law.

THANK YOU TO OUR

SILVER PATRON (\$10,000+)

Mary & Joe Landy
Leonard Morange Post #464
Doug and Stafford Meyer
Margaret & Andrew Paul
The Shah-Zion Family Fund

PRESIDENT'S COUNCIL (\$7,500 – \$9,999)

Rose & Steve Crawford
Mr. & Mrs. Donald M. Gray, Jr.

BENEFACTOR (\$5,000 – \$7,499)

Mr. Jonathan & Dr. Amy Atkeson
Jennifer & Andrew Colao
Mr. & Mrs. David Coquillette
Jennifer & Richard DeMartini
Annette & Bill Dowling
Kristen & Tom Evans
Mr. & Mrs. Kenneth Giuriceo
Mr. & Mrs. Glenn H. Greenberg



Karin & David Kuhns
Mr. & Mrs. John Lykourazos
Mr. & Mrs. W. Carter Neild
Mr. & Mrs. David Outcalt
Mr. & Mrs. James Rotenberg
Mr. & Mrs. Charles J. Urstadt
Rosanne & Mark Welshimer

LEADER (\$2,500 – \$4,999)

Mr. & Mrs. Ryan Anderson
Lisa Smith & David Barr
Mr. & Mrs. Brian Bodell
Bronxville Derby Association

Mr. & Mrs. Neal Denning
Ms. Lindsay Baker & Mr. Christopher DiAngelo
Mr. & Mrs. Michael Donovan
Mr. & Mrs. William Dougherty
Mrs. Chris Eldridge
Ms. Chris Zufelt & Mr. Brian Fetherstonhaugh
Ms. Judy M. Foley
Mr. & Mrs. Chun Fong
Susan & Ed Forst
Mr. James Hoch
Jonalie & Michael Korengold
Mr. & Mrs. Marc Kutzin
Mr. & Mrs. Thomas Lee
Mr. & Mrs. David Lewis
Jennifer & Scott Mackesy
Mr. & Mrs. Richard Nicklas
Mr. & Mrs. William Rizzo
Mr. & Mrs. Troy Ruhanen
Mr. & Mrs. Joseph Saluti
Vivek and Katie Shah
Mr. & Mrs. Philip D. Sherman
Laurie & Hoke Slaughter
Mr. & Mrs. Christopher Spring
Ms. Lisa Kunstader & Mr. Nick Stephens
Owen D. and Jennifer B. Thomas
Valerie Ann Wilson

MEMBER (\$1,000 – \$2,499)

Mr. & Mrs. Omar K. Abboud
Elizabeth & Peter Aherne
Mr. & Mrs. Stephen F. Arcano
Mr. Dana Arrighi
Mr. & Mrs. William H. Barton
Mary & Chris Behrens
Suzanne & Tom Bloomer
Mrs. Barbara Brackenridge
Mr. & Mrs. Patrick Burns
Mrs. Jennifer Wilson-Buttigieg & Mr. Brian J. Buttigieg
Michael A. Calano
Mariellen & Noble Carpenter
St. Joseph's Church
Mr. Kevin M. McGahren-Clemens
The Coffey's
Margaret & Anthony Colavita
Christopher & Susan Conniff
Dr. Patricia Cook
Lisa & James Corcoran

Mr. & Mrs. Robert Crystal
Mr. & Mrs. John Cushman
Mr. & Mrs. Giovanni Cutaita
Mrs. Cecelia Cutler
Susan & Michael Delaney
Mr. & Mrs. Robert P. Dohn
Mr. & Mrs. Michael Doheny
Mr. & Mrs. Damien Donaghy
Mr. William Ellinghaus
Mr. & Mrs. James R. Eustis
Mr. & Mrs. John B. Fitzgibbons
Vicki & Si Ford
Sue & Len Formato
Mrs. Anne Fredericks
Frehse Family Fund
The Frigon Fund
Mr. & Mrs. A. Corwin Frost
Mr. & Mrs. Gary Garofalo
Mr. & Mrs. William Gay
Mrs. Ingrid M. Mesa-Gibbons & Mr. Adam C. Gibbons
Mr. & Mrs. Thomas Giordano
Ms. Jane Skinner & Mr. Roger Goodell
Mrs. Constance Grassi
Mr. & Mrs. David S. Harris
Jennifer and Paul Heathwood Charitable Fund
Marilynn & John Hill
Linda & John Howitt
Ms. Jennifer L. Richardson & Mr. George K. Jaquette
Ms. Nancy Yu & Mr. Joseph Kochansky
Mr. & Mrs. Michael Koester
Mr. & Mrs. Andrew Korb
Mr. and Mrs. Brian Korb
Mr. & Mrs. Steven D. Krause
Mr. & Mrs. Beau Lescott
Kristin & Doug Londal
Mr. & Mrs. Daniel S. MacDonald, Jr.
Mr. & Mrs. Edwin A. Margolius
Mr. & Mrs. Robert McGrath
Ms. Ruth Walter & Mr. Kevin McNeill
Ms. Tracy McVey
Mr. & Mrs. Roman Michalowski
Mr. & Mrs. Brian Modesitt
Nicola & Terry Mullen
Mr. & Mrs. Sean Murphy
The Nagle Family
Mrs. Joan O'Connor
Ms. Dawn A. Patterson

DONORS

Mr. & Mrs. Richard Peacock
Mr. & Mrs. Kevin Phillips
Rosemary & Tony Phillips
Mr. & Mrs. James Powell
Mr. & Mrs. Andrew C. Quale
Mr. & Mrs. Richard K. Rogers
Michele & Jeffrey Rohr
Mr. & Mrs. Robert Rutter
Mr. & Mrs. Bradley Sabel
Mr. & Mrs. Michael Sands
Mr. & Mrs. David Scalzo
Jane & Luke Sears
Vivian & Robert Seman
Mr. & Mrs. George Shively
Colleen McMahon & Frank Sica
Mr. & Mrs. Thomas S. Sipple
Cristina Brusco, MD & Kirk Sperber, MD
Tina & Bill Staudt
Mr. & Mrs. Ronald Stechler
Mr. & Mrs. Steven Swartz
Mr. & Mrs. William B. Tarry
Mr. & Mrs. Frederick H. Taylor, Jr.
Volney & Kathleen M. Taylor Foundation
Mr. & Mrs. John E. Toffolon, Jr.
Mr. & Mrs. Brian Toolan
Anne & John Torell
Mr. & Mrs. Thomas Vail
Mr. & Mrs. Peter Vermette
Mr. & Mrs. Mark Webb
Mr. & Mrs. Leighton B. Welch
Helen & Tom Welling
Mr. & Mrs. John Westerfield
Mr. & Mrs. Deron Wolfe
Juliet & John Zygmunt
Anonymous

FRIEND (\$500 – \$999)

Mr. & Mrs. Anthony Anagnostakis
Mr. & Mrs. Robert Angelone
Dr. & Mrs. Thomas A. Angello
Mr. & Mrs. Michael Bellach
Mr. & Mrs. James Benjamin
Mr. Michael Benner, Esq.
Mr. & Mrs. Alexander Bici
Jane & Jack Bierwirth
Mr. & Mrs. Harold Bogle
Dr. & Mrs. Giovanni Boiano
Mr. & Mrs. Kevin Brown
Mr. & Mrs. Richard Buckley
Mr. & Mrs. Frank Cappelleri
Mr. Eric Cassano
Carol Conway & Robert Castano
Mr. Gerald Conway
Cynthia & George Cooney
Mr. Douglas Cruikshank
Ms. Noreen M. Culhane
Mr. & Mrs. Keith Dawson
Ms. Mallory Andrews & Mr. Jesse de la Rama III
Mr. & Mrs. Hap Deneen
Mr. & Mrs. Jon Denfeld
Mr. Philip Denning
Ms. Lianne DeSerres
Mr. & Mrs. Stephen Doherty
Mrs. Chester M. Edelmann
Elizabeth & Charles Engros
Gabriel Bundschuh & Associates, Inc.
Mr. & Mrs. Gregory J. Galligan
Mr. & Mrs. Frank T. Geysen
Mr. & Mrs. Stephen Giordano
Mr. & Mrs. Peter Greatrex
Mr. & Mrs. David H. Griffin
Ms. Cindy Guilianti
Ms. Jean E. Hanson
Mr. & Mrs. Andrew Harwood
Elizabeth & Gordon Harriss
Mr. & Mrs. Brian Harvey
Mr. & Mrs. Michael Heraty
Mr. & Mrs. John Hodulik
Mr. & Mrs. Kenneth Holden
Mr. & Mrs. Christopher Horvers
Mrs. Betsy Harding & Mr. Thomas C. Hutton
J. McLaughlin
Mrs. Janet Johnson
Mr. & Mrs. Thomas M. Kenney

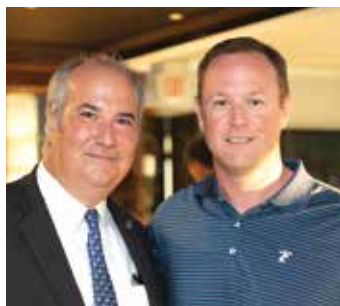


Mr. & Mrs. James T. Knight
Diana & Gregory Koster
Mr. & Mrs. Kurt Krestinski
Mr. & Mrs. Mark Liggitt
Mr. & Mrs. Ronald A. Mager
Mr. & Mrs. Patrick Marrinan
Eileen & Jeff Marshall
Mr. & Mrs. Christopher Martinelli
Ms. Michelle Mayer
Mr. & Mrs. Kevin McArdle
Cheryne & David McBride
Mr. Frederick W. McGrath
Nancy & Matt McKenna
Mr. & Mrs. Robert K. McNamara
Ms. Susan Finch Moore & Mr. Charles Moore
Mr. & Mrs. Thomas K. Moore
Mr. & Mrs. Brian Morrisroe
Laura & Brian Murphy
Liza & John Near
Mr. & Mrs. Jack Neumark
Mr. & Mrs. Chadwick Parson
Nancy and Bill Petty
Ellen & Pierre de Saint Phalle
Madryn & John Priesing
Mr. & Mrs. Damien Quinn
Mr. & Mrs. Paul Ramundo
Mr. & Mrs. Jaimin Rangwalla
Mr. & Mrs. Sheldon Reynolds
Ms. Nina Richter
Mr. & Mrs. Scott Robinson
Mrs. Alexandra Samra
Linda & Bob Shearer
Mr. & Mrs. Edward Sondey
Mr. & Mrs. Joseph M. Spillane
Sterling National Bank
Irena Choi Stern & Bruce Stern



OUR DONORS (Continued)

Mr. & Mrs. Joseph N. Stineman
 Ms. Berit Block & Mr. Phillip Tamussino
 Mr. Donald Tashner
 Schatze & Peter Thorp
 Christine & Tom Tormey
 Mr. & Mrs. Albert Van Ness
 Mr. & Mrs. Tyler Vaughney
 Nancy & Carlo Vittorini



CONTRIBUTOR (\$250 – \$499)

Julie & Jim Alexandre
 Mr. & Mrs. Steven J. Altamura
 Mr. & Mrs. Thomas G. Andruss
 Dr. Anne Angevine & Dr. Peter Angevine
 Mr. & Mrs. John T. Atkins
 Ms. Regina Baio
 Mr. Paul J. Benziger, Jr.
 Mrs. Janet Lyons & Mr. Dennis Berger
 Mr. & Mrs. Francis J. Bergold
 Dr. Julia Golier & Mr. William Bornmann
 Mr. & Mrs. Robert Caccavo
 Mr. & Mrs. Anthony Civale
 Mr. John Colavita
 Mr. & Mrs. Chris Collins
 Ms. Maryann T. Cortelli
 Mr. & Mrs. Jason Curran
 Mr. & Mrs. John Debitetto
 Mr. & Mrs. Raymond Del Savio
 Mr. & Mrs. Thomas Dempsey
 Ms. MaryAnne Denniston
 Mr. & Mrs. Robert Dobbin
 Mr. & Mrs. Robert C. Dohrenwend
 Mr. & Mrs. Brendan L. Dolan
 Claudia & Jeremy Dole
 Mr. & Mrs. Frederic A. Escherich

Mr. & Mrs. Robert C. Everett
 Nina & Christopher Evison
 Mr. & Mrs. Gerald M. Fischhoff
 Mr. & Mrs. Robert Freeman
 Ms. Charlotte Church & Mr. Jonathan Gaines
 Mr. & Mrs. Joseph Gherardi
 Mr. & Mrs. Vito A. Giordano
 Janet & Chris Goff
 Alida & Chris Goodman
 Ms. Christina Hall
 Mr. & Mrs. James F. Hayden
 Mr. & Mrs. Jim Hendry
 Ms. Erin Hill
 Jonella Custom Linens
 Joanne & Stephen Jones
 Mr. & Mrs. Levent Kahraman
 Mr. & Mrs. James Kirby
 Dr. & Mrs. Christian Klose
 Mr. & Mrs. Christopher Krieg
 Mr. & Mrs. Charles Law
 Marcia & Larry Lee
 Mr. & Mrs. Walter LeStrange
 Mr. & Mrs. James T. Lilly, Jr.
 Mr. & Mrs. Ronald Lockhart
 Mr. & Mrs. Joseph Lodi
 Ms. C. Helen Lovell
 Mr. & Mrs. Michael Lynch
 Mr. & Mrs. Robert MacNaughton III
 Valerie & Paul Marini
 Mr. & Mrs. David J. Massi
 Mr. & Mrs. Charles T. Maxwell
 Mr. & Mrs. Vincent J. McBride
 Sheryl & William McCafferty
 Mr. & Mrs. Mark D. McCarthy
 Mr. & Mrs. M. Patrick McCloskey
 Maura & Christopher McMahan
 Mr. & Mrs. Scott M. McMurray
 Mr. & Mrs. Clinton V. Meserole III
 Milburn Parkway, LLC
 Mr. & Mrs. Mark Miner
 Mr. & Mrs. James Mitchell
 Candy & Mike Monaco
 Mr. & Mrs. Christopher Nay
 Neelah Cashmere, Inc.
 Mr. & Mrs. William P. Newhall
 Mr. & Mrs. Ted Normand
 Ms. Mary Elizabeth O'Connor

Mr. & Mrs. David O'Shaughnessy
 Mr. & Mrs. Silvio Petriello
 Dr. & Mrs. Bernard Pierorazio
 Mr. & Mrs. Richard Pink
 Mr. & Mrs. Edward Poletti
 Mr. & Mrs. Frank Raneri
 Mr. Clyde E. Reetz
 Patricia & David Reilly
 Mr. & Mrs. James L. Richey
 Mr. & Mrs. Edward A. Ruffo
 Ms. Phyllis Gitter & Mr. Peter Russell
 The Honorable & Mrs. Frederick J. Salanitro
 Mr. & Mrs. Scott Samios
 Ms. Joan S. Sawyer
 Mr. John Schneider
 Mr. & Mrs. John Seminara
 Mr. & Mrs. Douglas Sesler
 Mr. & Mrs. Nathan Sevilla
 Mr. Donald E. Sharp
 Mr. & Mrs. Richard A. Shearer
 Olinda & John Simon
 Margaret & Bill Slattery
 St. Joseph's School
 Mr. & Mrs. Timothy F. Tyler
 Sarah & Bob Underhill
 Ms. JoAnna Foyle & Mr. Frans Vermeulen
 Mrs. Mani Mohindru & Mr. Amit Verma
 Mr. & Mrs. Lawrence Vranka
 Ms. Elizabeth Eaton & Mr. Matthew Watkins
 Mr. & Mrs. Christopher Watson
 Dr. & Mrs. Robert M. Wein
 Dr. & Mrs. Raymond Weiss
 Mr. & Mrs. Martin Welling
 Mr. & Mrs. Matthew Wetty
 Mr. & Mrs. James Wilmott
 Kelly & John Woods
 Mr. & Mrs. Peter Zhao
 Mr. & Mrs. Alan Zucker
 Clare Gorman & Jeff Zuckerman

DONOR (UP TO \$249)

Ms. Luci Abruzzo
 Ms. Wendy Sigurdson & Mr. Mark Adkins
 Ms. Lana Popkova & Mr. Mark Ahern

Trudy Ahlbrecht
 Mr. & Mrs. Rodolpho Amboss
 Ms. Catherine Olian & Mr. Robert G. Anderson
 Mr. Anthony Angarola
 Mr. & Mrs. Christopher Antenucci
 Mr. Thomas J. Ashley
 Ms. Mary Assumma
 Wilmot Construction Corp.,
 Mr. Guy Balancia
 Mr. & Mrs. Patrick Barret



Ms. Elizabeth Bauer
 Ms. Eugenia Kedas & Mr. Brock Bazinet
 Mr. & Mrs. Anthony Befi
 Mr. & Mrs. Hugo Bellingreri
 Ms. Kyle A. Moran & Mr. Glenn D. Bellitto
 Mrs. Doris Benson
 Mr. & Mrs. Peter K. Bertine
 Mr. & Mrs. Philip Biancavilla
 Mr. John Bona
 Mr. & Mrs. Richard H. Bower
 Ms. Kathleen Boyle
 Mr. & Mrs. Michael Brandes
 Mr. Gary Brill
 Mr. & Mrs. Joseph Brocia, Jr.
 Mrs. Mary Brown
 Mr. & Mrs. Louis Buccheri
 Mr. & Mrs. James Bunn
 Mrs. Mary Busti
 Mr. & Mrs. Brian Byrne
 Mr. & Mrs. Darnell Caballes
 Robert & Elizabeth Cangro
 Mr. & Mrs. James Canty
 Mr. & Mrs. Pat Capasso
 Mr. & Mrs. Louis Caraccio
 Mr. & Mrs. John Carapella
 Mr. & Mrs. James M. Carey
 Katherine & Tom Carr
 Mr. & Mrs. Robert Cartolano
 Mr. & Mrs. Eugene Carty
 Beth & John Caruso
 Mr. & Mrs. James Caulfield



Mr. & Mrs. Vincent J. Ciaramella
 Vivian & Bernard Coghlan
 Ms. Amy Brown &
 Mr. Paul Colatrella
 Dr. & Mrs. Carl Comuniello
 Mr. & Mrs. John Covais
 Mr. & Mrs. Michael Coyne
 Mr. & Mrs. Michael Crinieri
 Sheila & Oliver Cromwell
 Mr. & Mrs. John J. Cullen
 Ms. Mary Anne Damiano
 Mr. & Mrs. Craig D'Anna
 Mr. & Mrs. Nick Dator
 Mr. & Mrs. Peter D'Avanzo
 Anabella & Jesse Davis
 Carole & Joseph DeLaurentis
 Mrs. Gloria DelVecchio
 Mr. & Mrs. Alfonso DePippo
 Ms. Marie DePippo
 Candace & Cortes DeRussy
 Mr. & Mrs. Michael Dilegge
 Mr. & Mrs. Leo G. DiPasquale
 Ms. Linda Sawyer &
 Mr. Donald N. Dirks
 Dr. Eugene A. Diulio
 Ms. Danielle Zimbaro &
 Mr. Dwayne Doherty
 Ms. Linda Guaccero-Doherty
 Joan & Kevin Donohue
 Dr. Helene Murtha Dooley &
 Mr. Joseph Dooley
 Mr. Warren D. Douglas
 Mr. & Mrs. Paul B. Dysenchuk
 Mr. & Mrs. William L. Ellis Jr.
 Mr. & Mrs. Warren Empey



Mr. Paul Engelson
 Mr. & Mrs. John E. Estes
 Dr. Nora Farkouh &
 Mr. Samir Farkouh
 Mr. & Mrs. John Fix
 Cathy & Michael Flanagan
 Ms. AnneMarie Flannery
 Mrs. Virginia Fleming
 Liz & Biff Folberth
 Mr. & Mrs. William Frey
 Ms. Nancy Friedman
 Ms. Maryann Frusciant
 Mr. & Mrs. Daniel Galella
 Mr. & Mrs. Robert Galloway
 Elsa & Donald Gammon
 Mr. & Mrs. Sal Gangemi
 Mr. & Mrs. Robert E. Garber
 Mr. & Mrs. Madappallil George
 Mr. & Mrs. Morris A. Giannotto
 Mr. & Mrs. Robert Giraldi
 Mr. & Mrs. Vincent J. Glazewski
 Ms. Esta Goodman
 Mr. & Mrs. Peter Goodson
 Ms. Jennifer Gordon
 Mr. & Mrs. Stephen Grant
 Cathy and Jack Gravenese
 Mr. & Mrs. Joseph Gresia
 Mr. & Ms. John Griffen
 Ms. Janice Groth
 Mr. & Mrs. Eric P. Haims
 Mr. & Mrs. Harold Hall
 Mr. & Mrs. Carl C. Hamann
 Mrs. Sue Hartwell &
 Reverend Robert Hartwell
 Mr. & Mrs. William C. Heck
 Bella Hermosa-Villacorta
 Mr. and Mrs. Al Hodson
 Mr. & Mrs. Andrew Hogue
 Mrs. Virginia Holek
 Mrs. Carolyn P. Howley
 Ms. Cathy Hurley
 Mr. Richard J. Hurley
 Mr. & Mrs. Stephen J. Huvane
 Ms. Dorothy T. Iorio
 J. Hilburn
 Juli & Robert Jackson
 Mr. & Mrs. Walker Jacobs
 Mr. Drew Jaglom
 Erica & Doug Jones
 Mrs. Mary Molloy &
 Mr. Walter C. Jones
 Mr. & Mrs. Gary Joseph
 Mr. & Mrs. Albert Kawer
 Ms. Marion Keegan

Mr. & Mrs. Peter Kelleher
 Mrs. Anne C. Kelty
 Mr. & Mrs. Emmet Keveney
 Ms. Lucille Kinney
 Mr. & Mrs. Brooks J. Klimley
 Mr. & Mrs. Eric LaMons
 Marcia & Jeff Lange
 Mr. & Mrs. Robert Lappetito
 Catherine & Peter Laterza
 Mr. & Mrs. Dan Latham
 Mr. & Mrs. Anthony Lauriello
 Lawrence Hospital Employees
 Mr. & Mrs. Steven Lazzaro
 Mr. & Mrs. Antonio Leo
 Dr. & Mrs. Robert Lerner
 Mr. & Mrs. Leonard Lieboff
 Mr. & Mrs. Bartholomew Linehan
 Mr. & Mrs. Philip J. Lombardo
 Mr. & Mrs. Stuart Mackintosh
 Mr. & Mrs. Alastair MacMillan-Bell
 Mr. & Ms. Gregory A. Maitner
 Mr. & Mrs. Carl Mann
 Mr. & Mrs. Luigi Marcoccia
 Lynn & Richard Mariani
 Mr. Nick Markola
 Ginny & Ed Martin



Mr. & Mrs. Patrick Martin
 Ms. Roberta Martin
 Dr. & Mrs. Robert Martin
 Dr. Robert J. Marzziotti
 Mr. & Mrs. Robert P. Marzziotti
 Mrs. Martin McAteer
 Mr. & Mrs. James B. McCaffrey
 Mrs. Mary D. McCarren
 Mr. & Mrs. Robert McCarthy
 Mr. & Mrs. Stephen McCarthy
 Mr. & Mrs. Tim McCarthy
 Mr. & Mrs. Michael McEnroe
 Mr. & Mrs. Thomas A. McKenna
 Marlene & George McKinnis
 Mr. Gerry McLoughlin
 Mr. & Mrs. John McSherry
 Ms. Joann Meehan



Mr. & Mrs. Jack Mehler
 Laura & Mark Mendley
 Mr. & Mrs. Benjamin Metzger
 Mr. & Mrs. Paul A. Michels
 Mr. & Mrs. Charles S. Miller
 Mr. & Mrs. Chris Mincak
 Pam & Guy Minetti
 Anthony Minicucci &
 George Minicucci
 Mrs. Jane K. Mitchell
 Dr. & Mrs. Michael J. Morelli
 Mr. & Mrs. Bradley Morgan
 Ms. Concetta Mucci
 Mary Liz & Bill Mulligan
 Ms. Janice Munson
 Ms. Alice P. Munzo
 Mr. & Mrs. John Murphy
 Mr. John F. Murphy
 Mr. & Mrs. Joseph Murphy
 Lorraine Mohan & James Murray
 Mrs. Linda Nagle
 Mr. & Mrs. Ralph Napolitano
 Ms. Darla Silva & Mr. William New
 Mr. & Mrs. Jeffrey Nicholson
 Ms. Elda Di Re & Mr. Sean O'Brien
 Mr. & Mrs. William F. O'Connell
 Dorothea & Ken O'Connor –
 In Honor of Jennifer & Brian
 Keating
 Mr. & Mrs. Eric Odin
 Dr. Jessica Sessions &
 Mr. Robert O'Hare
 Ms. Joan T. O'Neill
 Mr. & Mrs. Edmond O'Reilly
 Mr. & Mrs. Allan D. Osten
 Teresa McRoberts &
 Stephen Palfrey
 Mr. John G. Palladino
 Mr. & Mrs. David Park
 Mr. & Mrs. Alec Parsons
 Mr. & Mrs. John Phelan
 Mr. & Mrs. Vito Pinto
 The Piper Family
 Mr. & Mrs. Robert Pisano
 Mr. & Mrs. Paul Planet

OUR DONORS (Continued)



Mr. & Mrs. Richard J. Poccia
 Mr. & Mrs. Giovanni Portale
 Donna & Lloyd Prezant
 Mr. & Mrs. Richard G. Pyle
 Mr. & Mrs. Robert Rabsey
 Mr. & Mrs. Saul H. Radin
 Mrs. Bunny Rappaport –
 In Memory of Edna Mae Huff
 Mr. & Mrs. Maurice Reidy
 Susan E. Reisinger
 Mr. & Mrs. Ralph Ressa
 Riccardi Landscape Design
 Ms. Carmela Rice
 Ms. Frances Roberts
 Mr. & Mrs. Frederick V. Romano, Jr.

Harriet and Robert Rubin
 Mr. & Mrs. James Ruddy
 Ms. Stephanie Rusnak
 Ms. Diane Ryan
 Mrs. Catherine Perkinson Sabol
 Mr. & Mrs. Isaac Sacolick
 Mrs. Carola Saponara &
 Dr. Eduardo M. Saponara
 Lisa & Mike Sargent
 Mr. & Mrs. Mark Schivley
 Ms. Rozanne Moretti-Schwab
 Mr. & Mrs. Rudolph Schwab
 Mr. & Mrs. Christopher L. Scotti
 Ellen & Bob Seabring
 Diane & Elliot Senderoff

Mr. John E. Seng
 Mr. & Mrs. Andreas Seuffert
 Mrs. Rita Shea
 Ms. Elizabeth Sheahan
 Mr. & Mrs. Nicholas Sheumack
 Mrs. George Shively
 Chantal & Bob Simon
 Mr. Anthony J. Sirabella
 Mr. & Mrs. John J. Sirabella
 Ms. Mary Smith
 Mr. & Mrs. Timothy Smith
 Mr. & Mrs. Marvin M. Specter
 Mr. & Mrs. Roger N. Spitz
 Mr. & Mrs. Peter J. Srere
 Mr. & Mrs. O. K. Stauble
 Mr. & Mrs. Peter Stein
 Rita & Alan Steinkamp
 Mrs. Louise G. Stern
 Mr. Hedley Stothers
 Mr. & Mrs. Ralph S. Stupple
 Mr. & Mrs. Edward Sulimirski
 Mr. & Mrs. Joseph Sullivan
 Ms. Audrey Sutton
 Mr. & Mrs. Jeffrey Symons
 Dr. Alyssa Gursky &
 Mr. Nunzio Tarantino
 Mr. Gregory Tobin
 Margaret & John Torell

Town of Eastchester
 Mr. & Mrs. Frank Travers
 Mr. and Mrs. David Unger
 Dr. & Mrs. George L. Unis
 Ms. Maria Valente
 Mr. & Mrs. James Von Albade
 Ms. Kerry Walsh
 Mr. William Weber
 Mr. & Mrs. Brendan Weiden
 Westchester Funeral Home INC
 Peggy & Dick Williams
 Mr. & Mrs. Daniel Wilson



Ms. Makiko Tanaka &
 Mr. Andrew Wong
 Mrs. Bernice O. Yancy
 Mr. William Zambelli
 Mr. & Mrs. Norman Y. Zelvin

“ Everyday The Community Fund is making a difference in the lives of Bronxville Eastchester and Tuckahoe residents. From EVAC ambulances, to Senior, Family and Youth Programing, as well as Health and Wellness Services, the Fund is there. As we enter our 100th year know that many programs for our residents would not be possible without the funding we provide or the tireless work of our volunteers. Thank you for your support!

– Bill Rizzo, President 2018-2019



GOLF OUTING

We would like to thank our sponsors and participants of our 2018 Golf Outing.

2018

GRAND SPONSORS (\$15,000)

Pepe Auto Group

The Raffiani Family Foundation



DINNER SPONSOR (\$10,000)

NY Presbyterian/
Lawrence Hospital Center

BIB SPONSOR (\$5,000)

Strategic Wellness & Insurance Management
Services, Inc.



CART SPONSOR (\$5,000)

Park Sterling Realty

PUTTING SPONSORS (\$5,000)

TJM Investments



LUNCH SPONSOR (\$3,500)

Houlihan & O'Malley Real Estate Services

BEVERAGE STATION SPONSORS (\$2,500)

Hymes and Associates, CPA
Orangetheory Fitness Tuckahoe

COCKTAIL SPONSOR (\$2,500)

Cognitive Assessment Services Inc.

CHIPPING AND DRIVING RANGE SPONSOR (\$1,500)

Bertine, Hufnagel, Headley, Zeltner,
Drummond & Dohn LLP



GOLF OUTING (Continued)

SUPPORTERS (\$1,000)

Boiano Dental Group
 Casale Family Foundation
 Margaret & Anthony Colavita
 Rose & Steve Crawford
 Elide Building Corp. -
 The Seminara Family
 Houlihan Lawrence Real Estate
 Rosetta and Kevin McArdle
 Chuck and Mark Rollins
 James Romeo
 Tuckahoe Eastchester Lions Club
 Jane Vergari, Happy French
 Zingaro, Houlihan Lawrence



TEE SPONSORS (\$300)

Atlantic Irrigation Specialties, Inc.
 Berkshire Hathaway Eastchester
 Beth Campbell Real Estate
 Cornell's True Value
 Eastchester Italian American
 Citizens Club, Inc.
 Eastchester Little League
 Eastchester Rotary
 Eastchester Town Board
 Diane Hackett & Val Zorila
 Mr. & Mrs. David S. Harris
 Henry A. Blom DDS
 Houlihan Lawrence
 J.C. Fogarty's Town Tavern
 Kawer's Tuckahoe Paint & Glass, Inc.
 Andy Korb, Houlihan Lawrence
 Mr. & Mrs. Peter Lacalamita
 LGS Specialty Sales
 Nature's Cradle Nursery
 Patricia Forgione Realty
 Paws and Play Pet Resort
 Rogoff & Company
 Sal's Auto Service, Inc.
 Michael Serio, Inc.; Complete Tree
 Care
 Mr. John P. Silvestri
 Lisa Vitiello Agency Inc, State Farm
 Barbara & Fred Taylor
 Tuckahoe Republican Committee
 Veneruso, Curto, Schwartz & Curto,
 LLP
 Village Lutheran Church and
 The Chapel School
 Wartburg
 Wayne Printing, Inc.

AUCTION/RAFFLE/PRIZE CONTRIBUTORS

3- D Cleaners and Wash Basket
 Alka-East Electronics, Inc.
 Anonymous
 Barry's Bootcamp
 Mr. & Mrs. Stephen Blumenreich
 Boo Games
 Bill Borfitz
 Cindy Bothwell, Nutmeg
 Mr. Nick Bova, PGA Teaching Professional
 Bronxville Wine & Spirits
 Michael A. Calano
 Mr. & Mrs. Gray Calvert
 John and Beth Campbell
 Bill and Cathleen Carney
 Jennifer & Andrew Colao
 Mr. John Colavita
 Continental 109
 David & Romy Coquillet
 Ms. Noreen M. Culhane
 Mr. & Mrs. Michel Dimitri
 Dobbs & Bishop Fine Cheese
 Eastchester/Tuckahoe Chamber of
 Commerce
 Kristen and Tom Evans
 Mr. & Mrs. Chris Fahy
 Dr. Randall Feingold
 Judy M. Foley
 Mr. & Mrs. Robert Freeman
 The Goodell Family
 Greenwood Flowers
 Mr. & Mrs. Christopher Gunther
 Mr. & Mrs. Andrew Harwood
 Mr. and Mrs. William Henningson
 Mr. & Mrs. Aaron Hood
 Mr. & Mrs. Walker Jacobs
 Ms. Jennifer L. Richardson &
 Mr. George K. Jaquette
 Thomas Klapatch
 Mr. & Mrs. Michael Koester
 Andrew & Amy Korb
 Jonalie & Michael Korengold
 Mr. & Mrs. Kurt Krestinski
 Claire Leone



Mr. Richard Leroy
 Mr. & Mrs. Beau Lescott
 Mr. and Mrs. John Lykouretzos
 Lyte Body Fitness
 Mr. & Mrs. Robert MacNaughton III
 Maison Rouge
 Mario Forgione Landscaping
 Matty's Auto Body, Inc.
 Patrick McEnroe
 Marianne & Steve Mills
 Mrs. Morgans Flower Shop
 Mr. and Mrs. Jack Mullen
 Mrs. Sarah Muehlhausen-Murphy &
 Mr. Richard Murphy
 NY Football Giants
 NY Jets Community Relations
 The New York Yankees
 Mr. & Mrs. Patrick D. O'Brien
 Mrs. Joan O'Donnell
 Orangetheory Fitness Tuckahoe



Dave and Katharine Outcalt
 Underhills Crossing Restaurant
 Mrs. Amy Parsons/Essentialist
 Peony Nails
 Clyde E. Reetz
 Mr. & Mrs. William Rizzo
 Steven and Randi Ross
 Sal's Auto Service, Inc.
 Scalini Osteria
 Scarsdale Auto Clinic, Inc.
 Anthony Schepis
 Katie & Vivek Shah
 Mr. & Mrs. John Sheehan
 SLT Fitness
 Lisa H. Sorenson, Photography
 SoulCycle
 Lisa Vitiello Agency Inc, State Farm
 Lisa Kunstadter & Nick Stephens
 Sterling National Bank
 Barbara & Fred Taylor



Underhills Crossing Restaurant
 Mr. & Mrs. Conrad van Tienhoven
 Mr. & Mrs. Tyler Vaughey
 Jane Vergari
 Mr. & Mrs. Peter Vermette



2018 Golf Outing Co-Chairs
 Kiri Wolfe and Robert Castaño

CORPORATE SUPPORT

The Board of The Community Fund would like to thank the following corporations that generously supported their employee's contributions.

American Express

Assured Guaranty

BlackRock

BNY Mellon

Carnegie Corporation of New York

Deutsche Bank Americas Foundation

First Eagle Investment Corporation

Genetech

Goldman, Sachs & Co.

Matching Gift Program

MBIA

Pepsico

Pfizer

Piper Jaffray

The Tow Foundation

UBS

Matching Gift Program

Viacom

OUR VOLUNTEERS

We would like to thank the following individuals who generously contributed their time, expertise and inspiration.

AGENCY EVALUATORS

Jocelyn Angelone	Tom Giordano	Elizabeth Peacock
Lisa Barr	Won Giuriceo	Betsy Putnam
Hilary Blumenreich	Betsy Goodell	Elizabeth Rangwella
Lisa Bodell	Caitlyn Greatrex	Patricia Reilly
Michael Calano	Andrew Korb	Bill Rizzo
Kevin McGahren-Clemens	Michael Korengold	Cory Scalzo
Doug Cruikshank	Amy Krause	David Scalzo
Jay Curran	Chris Krieg	John Schneider
Nancy D'Anna	Jennifer Lescott	Katie Shah
Lisa Dawson	Robin Lewis	Marisa Sheumack
Jon Denfeld	Ron Mager	Jeff Ungvary
Ashley Donovan	Pam Morrisroe	Alber Van Ness
Barbara Eustis	Richard Murphy	Mark Webb
Ann Frey	Vanessa O'Friel	Vanessa Webb
Gary Garofalo	David O'Shaunessy	George Winn
	Amy Parsons	Tempe Zucker



GOLF OUTING

Margaret Colavita	Doug Meyer
Neal Denning	Katharine Outcalt
Caroline Dimitri	Donna Ruhanen
Ashley Donovan	Marty Schulman
Thomas Giordano	Erica Sevilla
Fran Harris	Katie Shah
Jennie Jacobs	Tom Sipple
Andy Korb	Fred Taylor
Peter Lacalamita	Jeff Ungvary
Rosetta McArdle	Jane Vegari
Kevin McNeill	Kerry Walsh
Ashley Mestl	



OUR BOARD OF DIRECTORS

July 1, 2017 - June 30, 2018

James Rotenberg	<i>President</i>
William J. Rizzo	<i>President-Elect</i>
Kate Hargrove Ramundo	<i>Secretary</i>
Sue Conniff	<i>Treasurer</i>
Jennifer Lescott	<i>Investments Co-Chair</i>
William U. Knox	<i>Investments Co-Chair</i>
Donna Ruhanen	<i>Marketing Chair</i>
Annette Healey Dowling	<i>Campaign Co-Chair, Bronxville</i>
P. Douglas Meyer	<i>Campaign Co-Chair, Bronxville</i>
Michael A. Calano	<i>Campaign Co-Chair, Eastchester / Tuckahoe</i>
David Scalzo	<i>Campaign Co-Chair, Eastchester / Tuckahoe</i>
Jennifer Buckley	<i>Evaluations Co-Chair</i>
Jonalie Korengold	<i>Evaluations Co-Chair</i>
Robert Castaño	<i>Golf Co-Chair</i>
Kiri Wolfe	<i>Golf Co-Chair</i>
Barbara S. Eustis	<i>100th Anniversary Gala Co-Chair</i>
Ryan Anderson	Chris Krieg
Dana Arrighi	Rosetta McArdle
Lisa Bodell	Kevin McNeill
Jennifer Nelsen Colao	Amy Parsons
Ashleigh Donovan	Thomas Sipple
Kristen Evans	Jeff Ungvary
Gary Garofalo	Albert Van Ness
Thomas V. Giordano	Mark J. Welshimer
Frances Harris	

July 1, 2018 - June 30, 2019

William J. Rizzo	<i>President</i>
Kiri Wolfe	<i>President-Elect</i>
Kate Hargrove Ramundo	<i>Secretary</i>
Sue Conniff	<i>Treasurer</i>
Jennifer Lescott	<i>Investments Co-Chair</i>
William U. Knox	<i>Investments Co-Chair</i>
Donna Ruhanen	<i>Marketing Chair</i>
Annette Healey Dowling	<i>Campaign Co-Chair, Bronxville</i>
Chris Krieg	<i>Campaign Co-Chair, Bronxville</i>
Michael A. Calano	<i>Campaign Co-Chair, Eastchester / Tuckahoe</i>
David Scalzo	<i>Campaign Co-Chair, Eastchester / Tuckahoe</i>
Jennifer Buckley	<i>Evaluations Co-Chair</i>
Jonalie Korengold	<i>Evaluations Co-Chair</i>
Gary Garofalo	<i>Golf Co-Chair</i>
David O'Shaunessy	<i>Golf Co-Chair</i>
Barbara S. Eustis	<i>100th Anniversary Gala Co-Chair</i>
Amy Atkeson	Kevin McNeill
Hilary Blumenreich	Patricia Reilly
Lisa Bodell	John Schneider
Jay Curran	Katie Shah
Ashleigh Donovan	Jeff Ungvary
Kristen Evans	Albert Van Ness
Thomas V. Giordano	Mark Webb
Amy Krause	Dan Wilson
Robin Lewis	George Winn
Sheila Marcotte	

HONORARY BOARD MEMBERS

James L. Alexandre	Travis F. Epes	Laura L. Raffiani
Thomas Andruss	Robert Frehse	Jeffrey P. Rohr
George E. Austin	Betsy Goodell	Charles J. Rollins
William H. Barton, Jr.	Donald M. Gray, Jr.	Markham R. Rollins, III
Peter K. Bertine	Gayle Haller	James Rotenberg
Jeanne E. Branthover	Tom Likovich	Tracy Rutherford
Margaret Colavita	Daniel S. MacDonald, Jr.	Wes Sparks
J. Gregory Coleman	Robert W. McCann	Nick Stephens
Joseph G. Comizio, D.D.S.	Charles P. Meade	Joseph N. Stineman
Richard Davies	P. Douglas Meyer	Frederick H. Taylor
Neal Denning	David H. Morse	Juliet F. Zygmunt
Robert P. Dohn	Quentin Murphy, D.D.S.	
William L. Ellis, Jr.	Katharine Outcalt	

STAFF

Amy Korb, <i>Executive Director</i>
Liza Near, <i>Operations Assistant</i>
Sheridan Denfeld, <i>Finance Administrator</i>

THE COMMUNITY FUND FY 2018 AGENCIES AND PROGRAMS

Andrus Early Learning Center	337-4492
Bereavement Center of Westchester	787-6185
Cancer Support Team, Inc.	777-2777
Community Flu Shot Program at NYP/Lawrence Hospital	787-6060
The Counseling Center, Inc.	793-3388
D.A.R.E. Eastchester Police Department.	961-3464
D.A.R.E. Tuckahoe Police Department	961-4800
Eastchester Community Action Partnership	337-7768
Eastchester Teen Scene	771-3311
Eastchester Senior Programs & Services	771-3340
Eastchester Youth Council Summer Theater.	760-2517
Eastchester Volunteer Ambulance Corps (EVAC) Office	337-3071
Gramatan Village	337-1338
The Maxwell Institute.	337-6033
S.E. Consortium for Special Services	698-5232
Senior Citizens Council 10708 Center.	793-2222
Senior Citizens Council Tuckahoe Center	337-8487
Tuckahoe Police Youth Programs	961-4800
Tuckahoe Trolley	961-3100
Tuckahoe Library	961-2121
Westchester End of Life Coalition	320-9179
Wartburg	699-0800
Bronxville Village Hall 337-6500; Police Department 337-0500	
Eastchester Town Hall 771-3300; Police Department 961-3464	
Tuckahoe Village Hall 961-3100; Police Department 961-4800	



THE COMMUNITY FUND

BRONXVILLE • EASTCHESTER • TUCKAHOE

17 Sagamore Road, Bronxville, New York 10708

PHONE: (914) 337-8808 • EMAIL: info@thecommunityfund.org • www.thecommunityfund.org

Many thanks to our Member Agencies and Community Programs for the use of their photographs.

A copy of the latest financial report filed with the Attorney General of New York is available on request by writing to New York State Department of Law, Charities Bureau, 120 Broadway, New York, NY 10271 or to The Community Fund, 17 Sagamore Road, Bronxville, NY 10708.